

IS : 1786

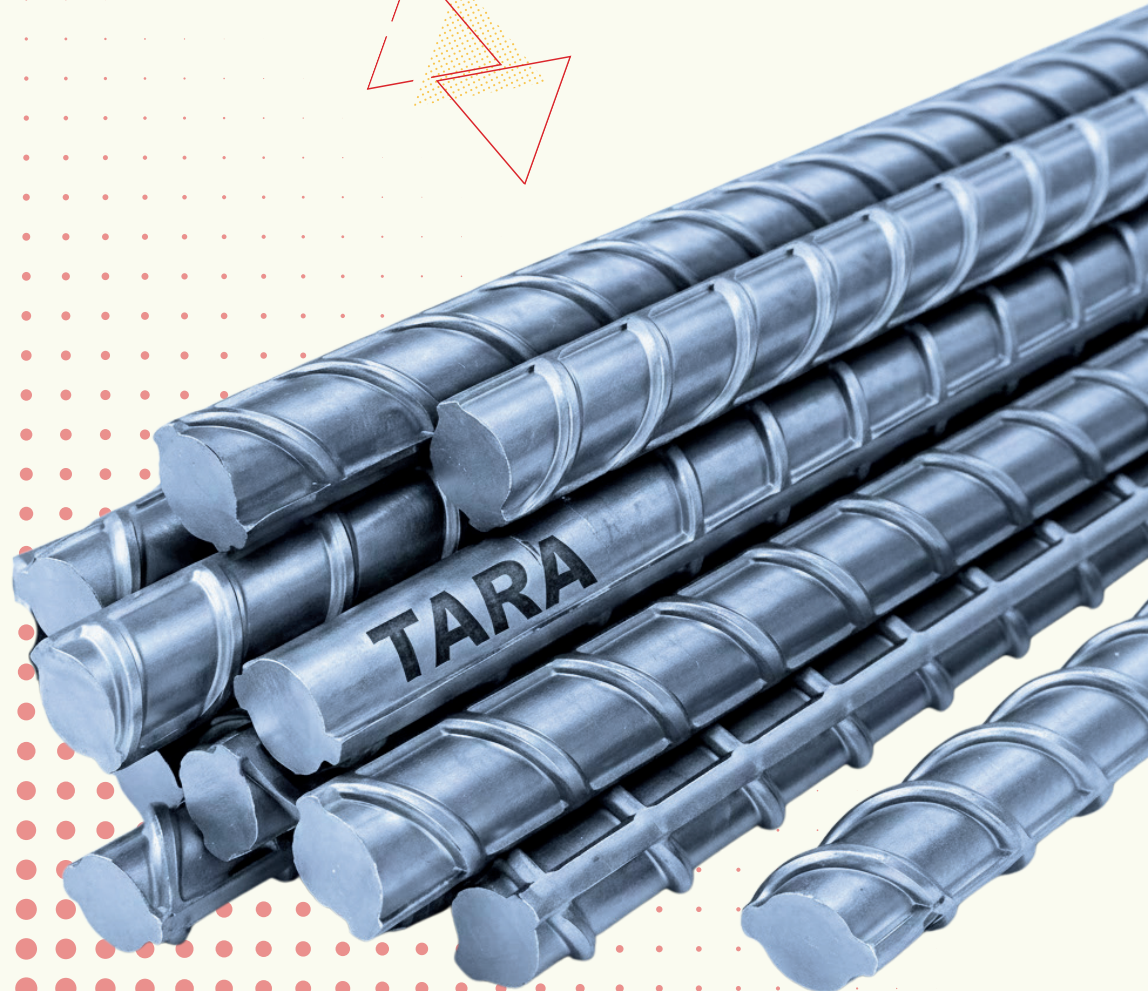


निर्माण का प्राण...



550D, 550+
TMT

TEMPCORE TECHNOLOGY



SIDDHARTHA ROLLING AND ENERGY PRIVATE LIMITED

Siddhartha Rolling and Energy Private Limited is a company engaged in manufacturing of MS billet, TMT bars, Angles and Channels for over 15 years under the brand name TARA, here we strongly believe in having a well balanced delivery of quality and quantity to our customers in best pursuit of perfection.

We have a capacity of 75000 ton per annum and with a setup of two furnace's of 15 ton each.

The company is ISO certified and registered with BIS and uses tempcore technology for its products known for its quality. We have a fully computerized laboratory with UTM and Spectrometer for the testing of raw material and finished products and dispatch in the presence of our qualified engineers.

We have a strong network for sales through dealers and distributors in Uttar Pradesh and Northeast Madhya Pradesh. The company is also listed as recognized suppliers for corporate and government sector undertakings

TMT BARS - 8MM



Physically Tested	Yes
Chemically Tested	Yes
Grade	Fe-500
Bar Diameter	8 mm
Yield Strength	520 – 560 N/mm ²
Ultimate Tensile Strength	600 – 680 N/mm ²
Elongation	18 – 24 %
UTS / YS Ratio	1.13 – 1.22
Carbon (C)	0.18 – 0.23 %
Sulphur (S)	0.025 – 0.050 %
Phosphorus (P)	0.035 – 0.050 %
Carbon Equivalent (CE)	0.026 – 0.035
Weight (Kg/Mtr)	0.374 – 0.385
No. Of Piece Per Bundle	11
Bundle Weight	52 – 53 Kg

Physically Tested	Yes
Chemically Tested	Yes
Grade	Fe-500 / Fe-550D / Fe-415
Bar Diameter	10 mm
Yield Strength	520 – 560 N/mm ²
Ultimate Tensile Strength	600 – 680 N/mm ²
Elongation	18 – 24 %
UTS / YS Ratio	1.13 – 1.22
Carbon (C)	0.18 – 0.23 %
Sulphur (S)	0.025 – 0.050 %
Phosphorus (P)	0.035 – 0.050 %
Carbon Equivalent (CE)	0.026 – 0.035
Weight (Kg/Mtr)	0.580 – 0.600
No. Of Piece Per Bundle	07
Bundle Weight	50 – 51 Kg

TMT BARS - 10MM



TMT BARS

TMT BARS - 12MM



Physically Tested	Yes
Chemically Tested	Yes
Grade	Fe-500 / Fe-550D / Fe-415
Bar Diameter	12 mm
Yield Strength	520 – 560 N/mm ²
Ultimate Tensile Strength	600 – 680 N/mm ²
Elongation	18 – 24 %
UTS / YS Ratio	1.13 – 1.22
Carbon (C)	0.18 – 0.23 %
Carbon Equivalent (CE)	0.026 – 0.035
Weight (Kg/Mtr)	0.845 – 0.860
No. Of Piece Per Bundle	5
Bundle Weight	51 – 52 Kg

Physically Tested	Yes
Chemically Tested	Yes
Grade	Fe-500 / Fe-550D / Fe-415
Bar Diameter	16 mm
Yield Strength	520 – 560 N/mm ²
Ultimate Tensile Strength	600 – 680 N/mm ²
Elongation	18 – 24 %
UTS / YS Ratio	1.13 – 1.22
Carbon Equivalent (CE)	0.026 – 0.035
Weight (Kg/Mtr)	1.500 – 1.550
No. Of Piece Per Bundle	3
Bundle Weight	57 – 58 Kg

TMT BARS - 16MM



TMT BARS

TMT BARS - 20MM



Physically Tested	Yes
Chemically Tested	Yes
Grade	Fe-500 / Fe-550D / Fe-415
Bar Diameter	20 mm
Yield Strength	520 – 560 N/mm ²
Ultimate Tensile Strength	600 – 680 N/mm ²
Elongation	18 – 24 %
UTS / YS Ratio	1.13 – 1.22
Weight (Kg/Mtr)	2.390 – 2.430
No. Of Piece Per Bundle	2
Bundle Weight	60 – 61 Kg

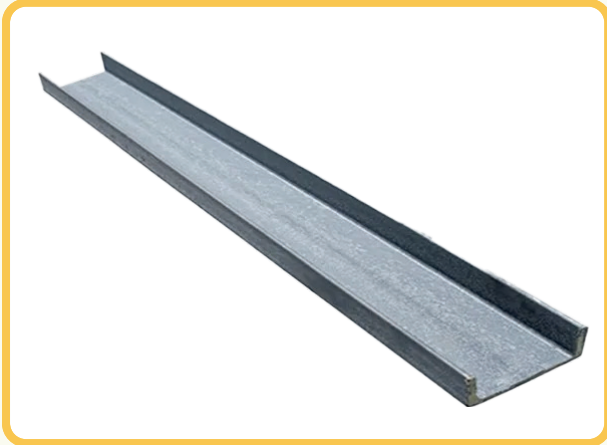
Physically Tested	Yes
Chemically Tested	Yes
Grade	Fe-500 / Fe-550D / Fe-415
Bar Diameter	25 mm
Yield Strength	520 – 560 N/mm ²
Ultimate Tensile Strength	600 – 680 N/mm ²
Elongation	18 – 24 %
UTS / YS Ratio	1.13 – 1.22
Weight (Kg/Mtr)	3.740 – 3.780
No. Of Piece Per Bundle	1
Bundle Weight	46 – 47 Kg

TMT BARS - 25MM



TMT BARS

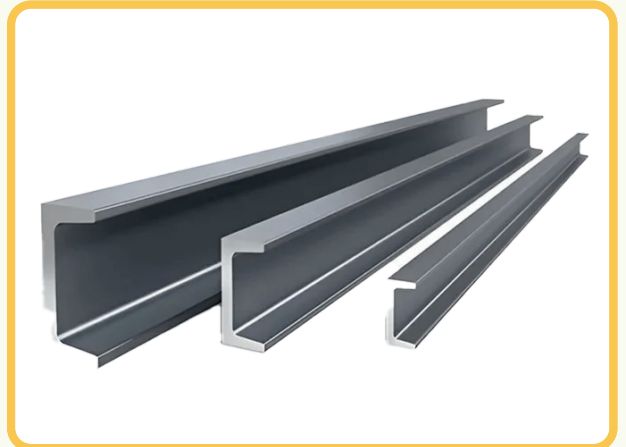
TARA 75 × 40 CHANNEL



Designation	TARA 75 × 40
Mass (Nominal)	5.70 Kg/m
Sectional Area	7.26 cm ²
Web Width (D)	75 mm
Flange Width (B)	40 mm
Web Thickness (t)	3.7 mm
Flange Thickness (T)	6.0 mm
Flange Slope	91.5°
Root Radius	6.0 mm
Toe Radius	2.0 mm

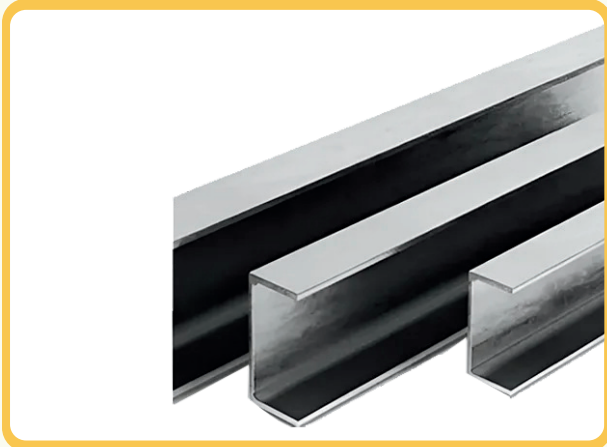
MC 75 × 40 CHANNEL

Designation	MC 75 × 40
Mass (Nominal)	7.14 Kg/m
Sectional Area	9.10 cm ²
Web Width (D)	75 mm
Flange Width (B)	40 mm
Web Thickness (t)	4.8 mm
Flange Thickness (T)	7.5 mm
Flange Slope	96.0°
Root Radius	8.5 mm
Toe Radius	2.4 mm



CHANNEL

TARA 100 × 50 CHANNEL



Designation	TARA 100 × 50
Mass (Nominal)	7.90 Kg/m
Sectional Area	10.0 cm ²
Web Width (D)	100 mm
Flange Width (B)	50 mm
Web Thickness (t)	4.0 mm
Flange Thickness (T)	6.4 mm
Flange Slope	91.5°
Root Radius	6.0 mm
Toe Radius	2.0 mm

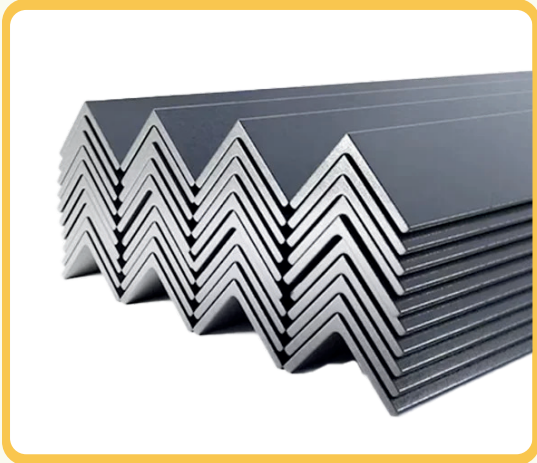
MC 100 × 50 CHANNEL

Designation	MC 100 × 50
Mass (Nominal)	9.56 Kg/m
Sectional Area	12.20 cm ²
Web Width (D)	100 mm
Flange Width (B)	50 mm
Web Thickness (t)	5.0 mm
Flange Thickness (T)	7.7 mm
Flange Slope	96.0°
Root Radius	9.0 mm
Toe Radius	2.4 mm



CHANNEL

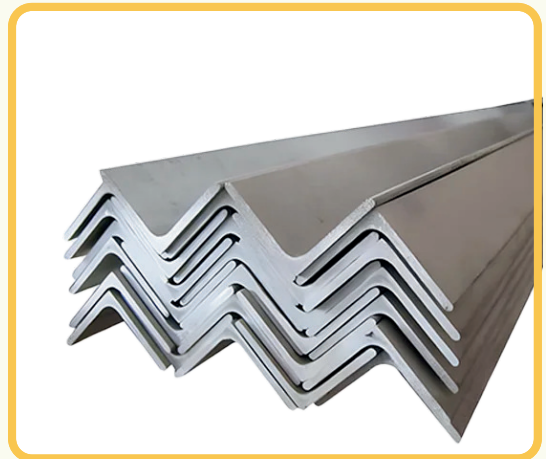
35 × 35 × 5 MS



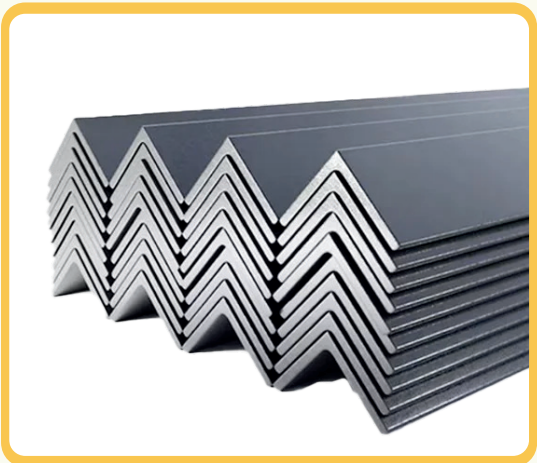
Designation	35 × 35 × 5
Mass (Nominal)	2.60 Kg/m
Sectional Area	3.27 cm ²
Leg Length (A × B)	35 × 35 mm
Leg Thickness	5.0 mm
Root Radius	5.0 mm
Toe Radius	Should be reasonable square
Slope Angle	90 Degree

Designation	40 × 40 × 5
Mass (Nominal)	3.00 Kg/m
Sectional Area	3.78 cm ²
Leg Length (A × B)	40 × 40 mm
Leg Thickness	5.0 mm
Root Radius	5.0 mm
Toe Radius	Should be reasonable square
Slope Angle	90 Degree

40 × 40 × 5 MS

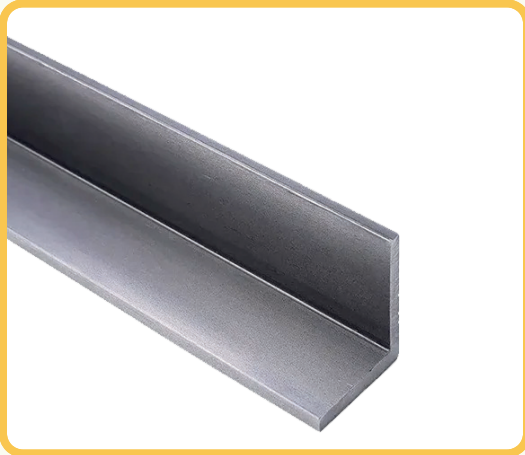


40 × 40 × 6 MS



Designation	35 × 35 × 5
Mass (Nominal)	2.60 Kg/m
Sectional Area	3.27 cm ²
Leg Length (A × B)	35 × 35 mm
Leg Thickness	5.0 mm
Root Radius	5.0 mm
Toe Radius	Should be reasonable square
Slope Angle	90 Degree

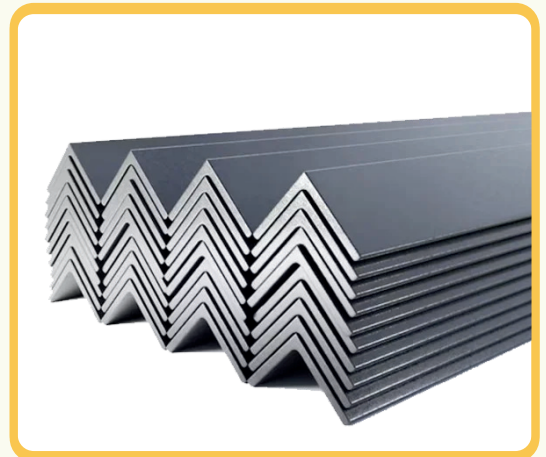
40 × 40 × 5 MS



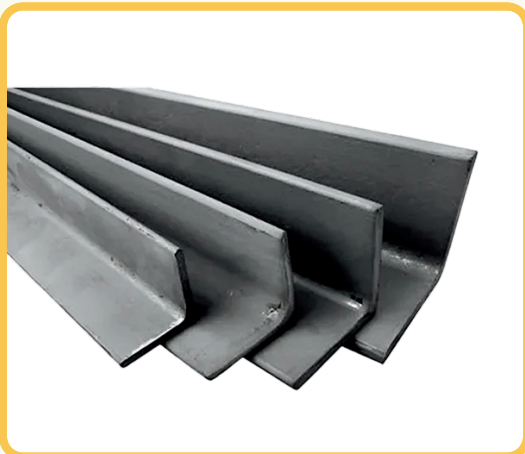
Designation	40 × 40 × 5
Mass (Nominal)	3.00 Kg/m
Sectional Area	3.78 cm ²
Leg Length (A × B)	40 × 40 mm
Leg Thickness	5.0 mm
Root Radius	5.0 mm
Toe Radius	Should be reasonable square
Slope Angle	90 Degree

Designation	40 × 40 × 6
Mass (Nominal)	3.50 Kg/m
Sectional Area	4.45 cm ²
Leg Length (A × B)	40 × 40 mm
Leg Thickness	6.0 mm
Root Radius	5.5 mm
Toe Radius	Should be reasonable square
Slope Angle	90 Degree

40 × 40 × 6 MS



50 × 50 × 5 MS



Designation	50 × 50 × 5
Mass (Nominal)	3.80 Kg/m
Sectional Area	4.79 cm ²
Leg Length (A × B)	50 × 50 mm
Leg Thickness	5.0 mm
Root Radius	5.5 mm
Toe Radius	Should be reasonable square
Slope Angle	90 Degree

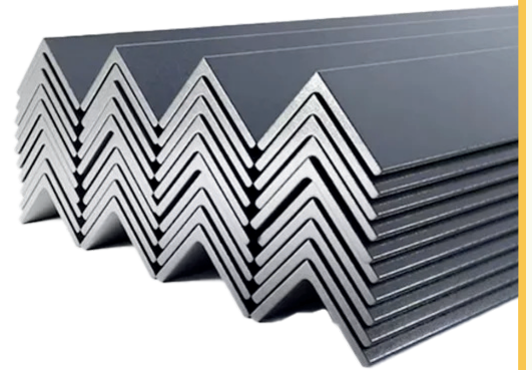
50 × 50 × 6 MS



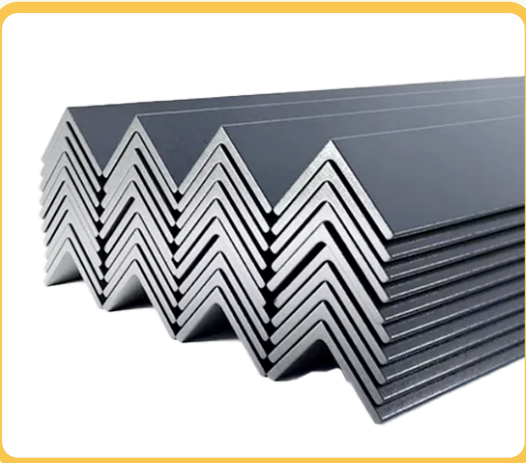
Designation	50 × 50 × 6
Mass (Nominal)	4.52 Kg/m
Sectional Area	5.75 cm ²
Leg Length (A × B)	50 × 50 mm
Leg Thickness	6.0 mm
Root Radius	6.0 mm
Toe Radius	Should be reasonable square
Slope Angle	90 Degree

Designation	65 × 65 × 5
Mass (Nominal)	5.15 Kg/m
Sectional Area	6.60 cm ²
Leg Length (A × B)	65 × 65 mm
Leg Thickness	5.0 mm
Root Radius	6.5 mm
Toe Radius	Should be reasonable square
Slope Angle	90 Degree

65 × 65 × 5 MS



65 × 65 × 6 MS



Designation	65 × 65 × 6
Mass (Nominal)	5.80 Kg/m
Sectional Area	7.44 cm ²
Leg Length (A × B)	65 × 65 mm
Leg Thickness	6.0 mm
Root Radius	6.5 mm
Toe Radius	Should be reasonable square
Slope Angle	90 Degree

निर्माण का प्राण...



SIDDHARTHA
ROLLING & ENERGY
PRIVATE LIMITED

Sales Office : 4th Floor Sangam Palace, Civil Lines, Near Coffee House 211001, Allahabad, Uttar Pradesh, India
Phone No. : +91 53225 60146 | **Mobile No.** : +91 9794052205
Website : www.sreplgroup.in | **Email Id** : sales@sreplgroup.in